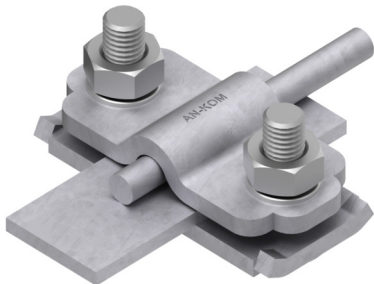
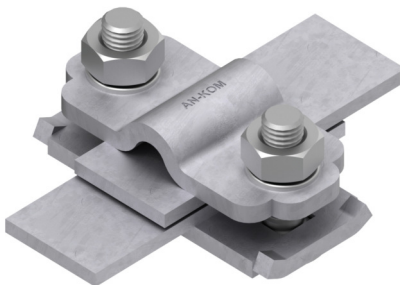


CLAMPS TEST type 5 (ŻUK)

A191116



lub

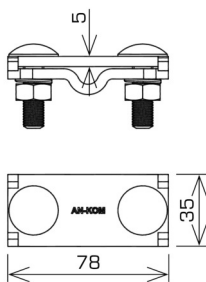


**WERSJA MATERIAŁOWA:**

hot galvanised steel

**OPIS:**

Control connection. Connecting a flat conductor to a round conductor.



<b>symbol</b> typ	<b>A191116</b> AN-07D/OG/-N
<b>screws</b>	M10 x 35
<b>conductors dimensions</b>	Ø8 / B* to 30 or B* to 30 / B* to 30 *B - tape conductor maximum width
<b>wersja materiałowa</b>	hot galvanised steel
<b>klasa odporności prądowej</b>	H=100 kA



AN-KOM 2 Sp. z o.o.  
 Inwałd, ul. ks. Władysława  
 Bukowińskiego 15  
 34-120 Andrychów



an-kom.pl  
 sales@an-kom.pl



tel./fax  
 +48 605 527 132