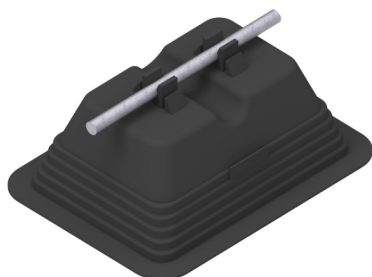


**HOLDERS Covered concrete with rectangular plastic bottom**

**B931532**



**WERSJA MATERIAŁOWA:**

plastic/concrete

**OPIS:**

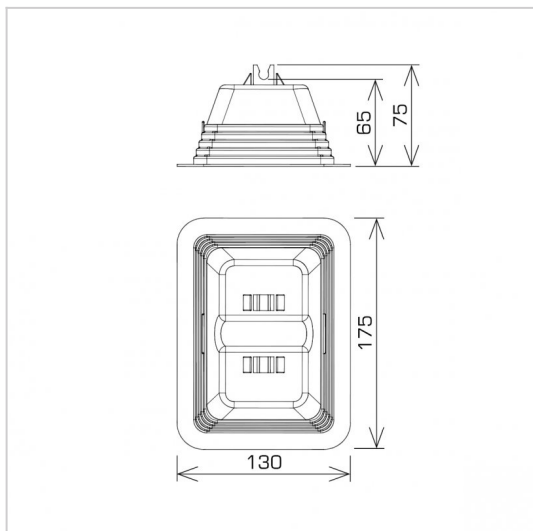
Concrete holder in plastic with a rectangular plastic base is used to build an air terminal grid on flat roofs. Made of polyethylene - PE (resistant to frost) with additives protecting against UV radiation. The base of the holder is made of ABS plastic which enables gluing the bracket to the roofing. The support is filled with a frost-resistant cement mortar.

**PURPOSE:** flat roofs covered with membrane or roofing felt

**ASSEMBLY:**

- gluing to roofing felt - with adhesive, e.g. **N828540**
- gluing to the membrane type roofing - with the adhesive recommended by the membrane manufacturer or after agreement with the roofing manufacturer with the adhesive for PVC membranes with the symbol **N828576**

**BOTTOM:** plastic



<b>symbol</b>	<b>B931532</b>
typ	AN-11S
<b>conductor(mm)</b>	Ø8
<b>weight(kg)</b>	~ 1
<b>wersja materiałowa</b>	plastic/concrete



AN-KOM 2 Sp. z o.o.  
 Inwałd, ul. ks. Władysława  
 Bukowińskiego 15  
 34-120 Andrychów



an-kom.pl  
 sales@an-kom.pl



tel./fax  
 +48 605 527 132